



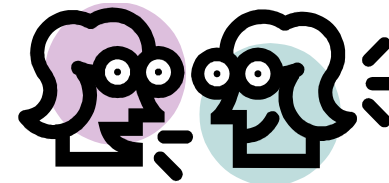
Alcoholic recipes



Cocktails Market

The Golden Age of Bartending is NOW!

- Fresh ingredients are used
 - Fruits
 - Juices
 - Herbs
 - Vegetables
 - Nuts
 - Peels
- Reference from classic and contemporary bartending books
- Molecular Mixology
- Internet networking and info sharing
- Traveling
- Training
- Bar shows
- Wide range of quality spirits, liqueurs & bitters available
- Competitions



Mojito

*You'll find in the following pages:
2 different categories of Mojito, and
the best recipes for each of them.*



Recommended Set up



+



1 pump = 10 ml
Syrup



1 pump = 15 ml
Sauce and Fruit mix

Above are the tools which will allow you an effective delivery

➤ MONIN Bottle racks: Heavy duty, next to the soda fountain

➤ MONIN pumps: For recipe consistency and better cost control

Standard cups size



9 Oz



12 Oz (Today serving size)



16 Oz

Classic Mojito



Recipe:

3 Pumps (30 ml) MONIN Mojito Mint syrup
4 lime wedges
10 mint leaves
40 ml rum
Soda water
Ice

MONIN notes:

A well known classic
MONIN Caribbean syrup could be added to
enhance the rum taste

Fill a glass with ice cubes to top
Pour 7 UP until 4/5 of the glass
Add MONIN Flavoring
Add lime wedges.
Stir , , straws & Serve.

Flavored Mojito



Recipe:

2 Pumps (20 ml) MONIN Mojito Mint syrup
1 pump (15ml) MONIN Le fruit
4 lime wedges
10 mint leaves
40 ml rum
Soda water
Ice

Fill a glass with ice cubes to top
Pour 7 UP until 4/5 of the glass
Add MONIN Flavoring
Add lime wedges.
Stir , , straws & Serve.

MONIN notes:

A well known classic
MONIN Caribbean syrup could be added to
enhance the rum taste

Try with MONIN Le Fruit

Mango, Strawberry, Raspberry, Red Berry,
Passion Fruit, Peach

Mojito recommendation :

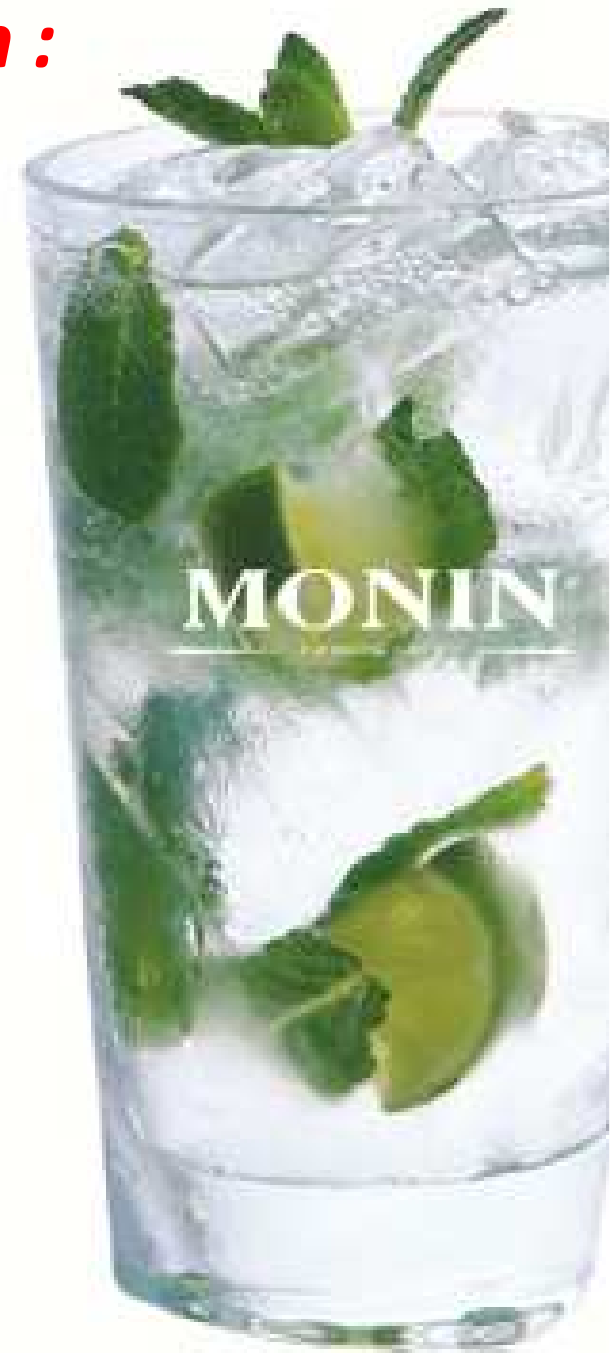
Fruity (based on MONIN Mojito Mint syrup)

➤ ***MONIN Le fruit***

- *Red berries*
- *Raspberries*
- *Passion fruit*
- *Strawberry*
- *Peach*

➤ ***MONIN Syrup***

- *MONIN Green Apple*
- *MONIN Caribbean*
- *MONIN Pomegranate*



*Other
Classics*



Recommended Set up



+



1 pump = 10 ml
Syrup



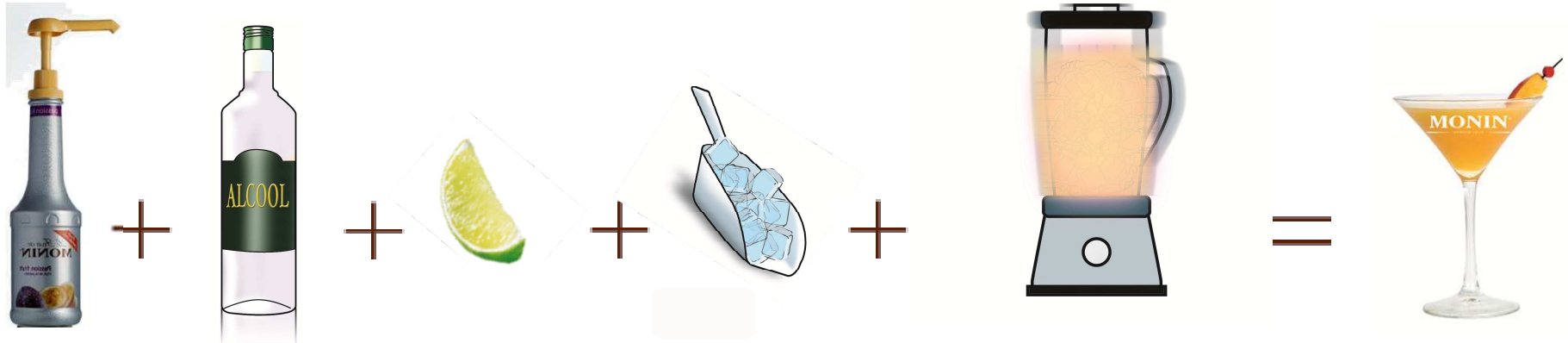
1 pump = 15 ml
Sauce and Fruit mix

Above are the tools which will allow you an effective delivery

➤ MONIN Bottle racks: Heavy duty, next to the soda fountain

➤ MONIN pumps : For recipe consistency and better cost control

Flavored Daiquiri



Recipe:

2 Pumps (30 ml) MONIN Le fruit
10ml lime juice
40 ml Rum
Ice

MONIN notes:

A well known classic
MONIN Caribbean syrup could be added to
enhance the rum taste

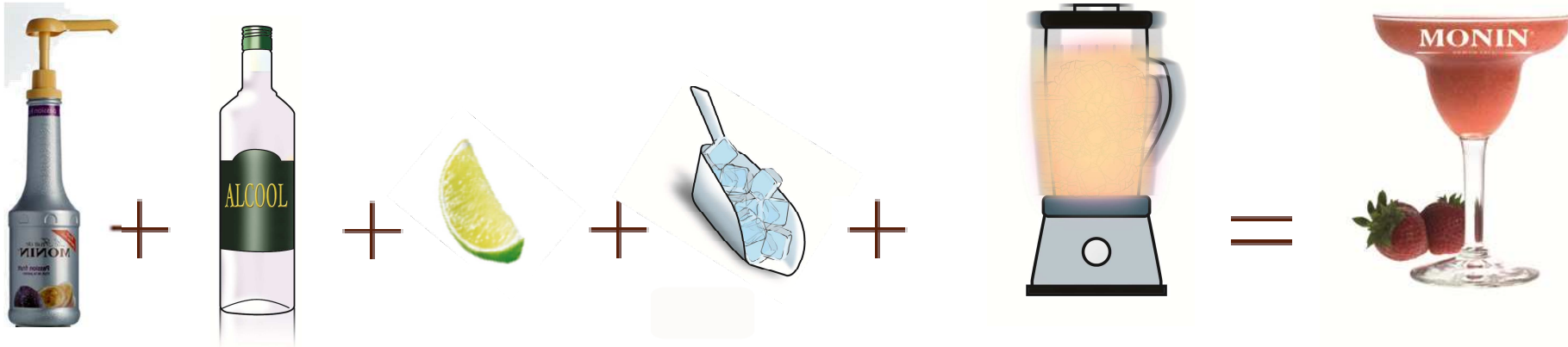
Method:

Combine ingredients in a blender cup, add ice cubes.
Blend until smooth
Pour into a cocktail glass

Try with MONIN Le Fruit

Raspberry, Strawberry, Red Berries, Mango
Peach, Passion Fruit

Flavored Margarita



Recipe:

2 Pumps (30 ml) MONIN Le fruit
10ml lime juice
40 ml Tequila
Ice

Method:

Combine ingredients in a blender cup, add ice cubes.
Blend until smooth
Pour into a cocktail glass

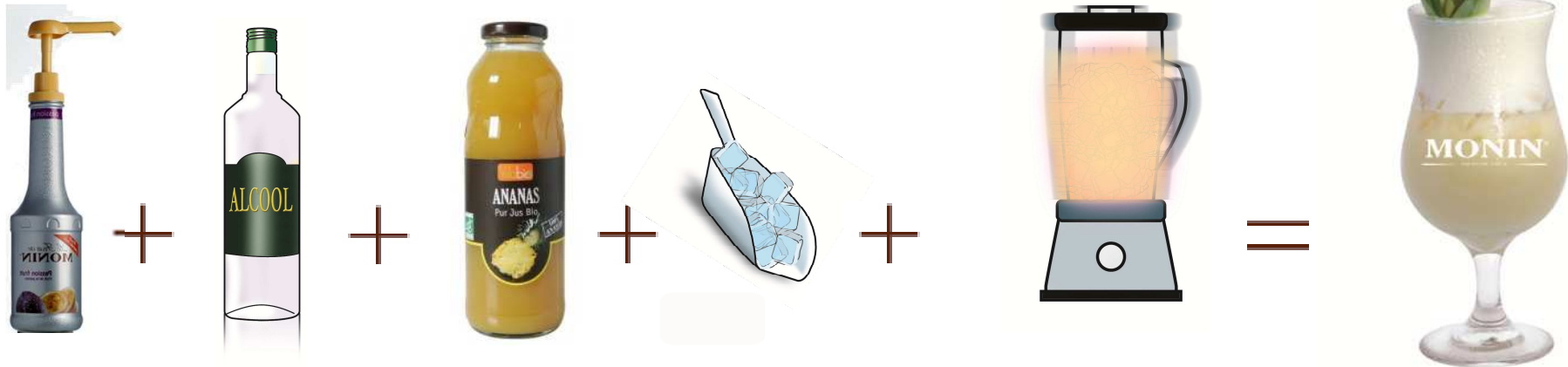
MONIN notes:

A well known classic

Try with MONIN Le Fruit

Raspberry, Strawberry, Red Berries, Mango
Peach, Passion Fruit

Flavored Colada



Recipe:

2 Pumps (30 ml) MONIN Le fruit Coconut
100ml Pineapple juice
40 ml Rum
Ice

Method:

Combine ingredients in a blender cup, add ice cubes.
Blend until smooth
Pour into a cocktail glass

MONIN notes:

A well known classic

Try to add to this recipe MONIN Le Fruit

Banana or Strawberry